



# Hexagonal Square Rectangular

A cutting edge  
collection of  
geometric shapes.

—  
Mosaic Catalog



**TREND**<sup>®</sup>

*Born with style*







---

# A global leader in sustainability

TREND Group's mosaics are manufactured using **up to 78% post-consumer recycled glass** and 60% less raw material, combining technological advances with environmental awareness.



TREND USA Ltd.  
MEMBER SINCE 2006



---

We create the perfect bond between glass and color and merge them into beautiful and innovative designs.









# Hexagonal



Hexagonal 160 (3 x 3,5 cm | 1 3/16" x 1 3/8")  
Private house | Norway  
Photo: FlisFram

HEXAGONAL, semi-transparent or opaque molten glass mosaic colors, veined with sparkling enamels and aventurina stone and shaped into hexagonal tiles.



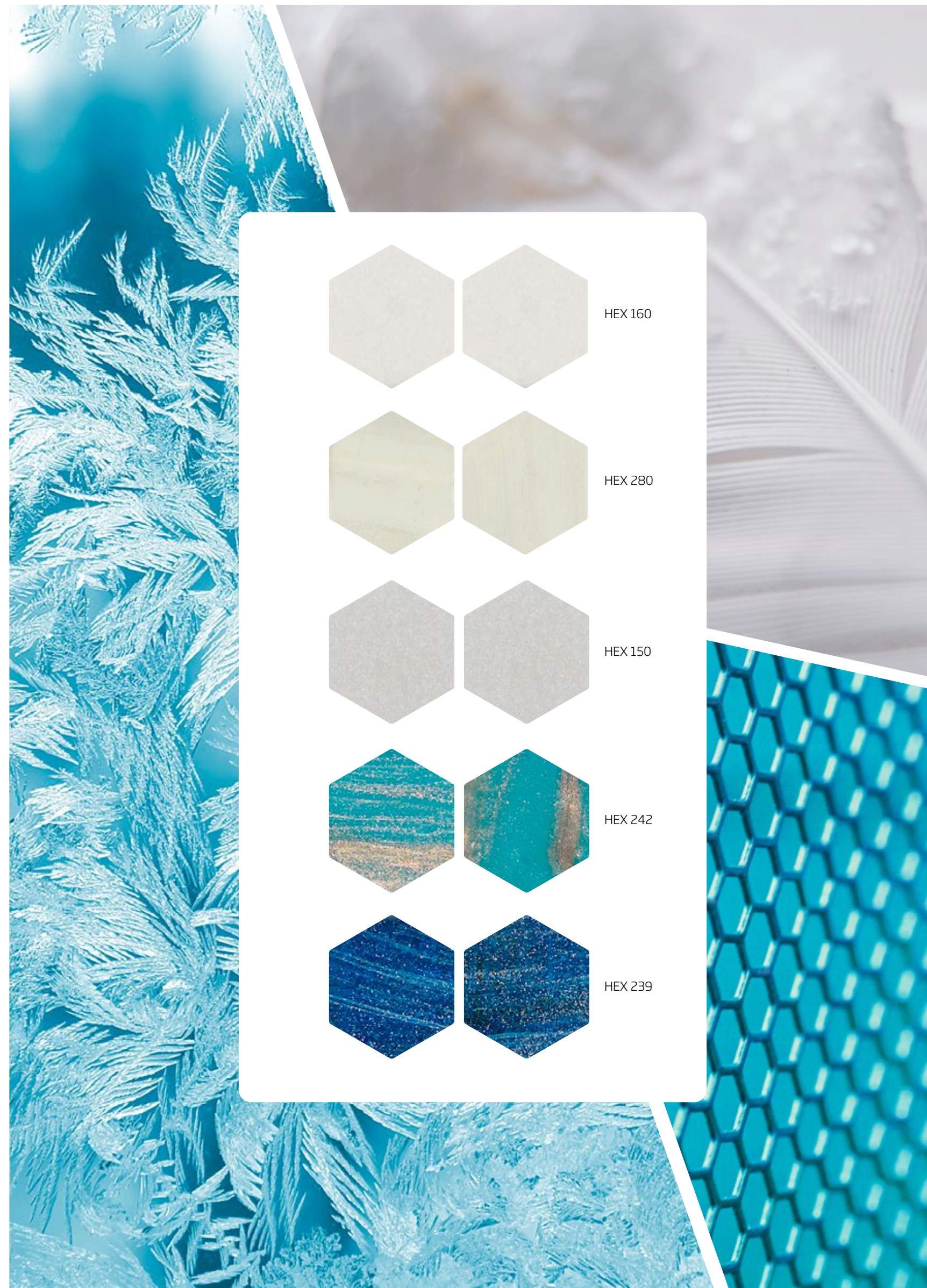


Hexagonal 280 (3 x 3,5 cm | 1 3/16" x 1 3/8")





Hexagonal 239 (3 x 3,5 cm | 1 3/16" x 1 3/8")  
Hotel Gran Tacande| Tenerife, Spain



HEX 160

HEX 280

HEX 150

HEX 242

HEX 239



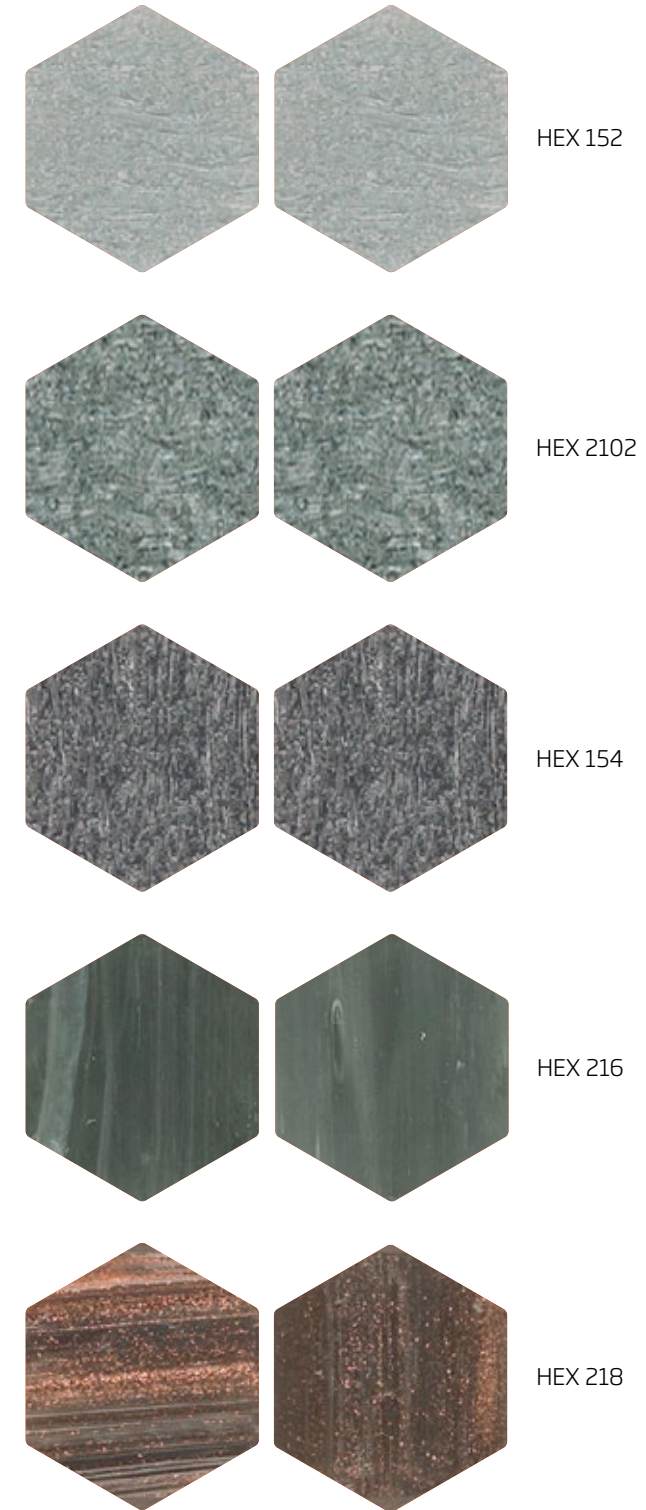


Hexagonal 239 (3 x 3,5 cm | 1 3/16" x 1 3/8")  
Hotel SPA Dr Irena Eris | Polanica-Zdrój, Polonia

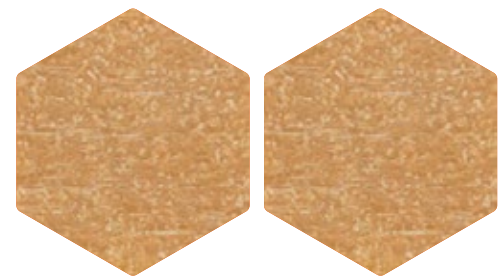
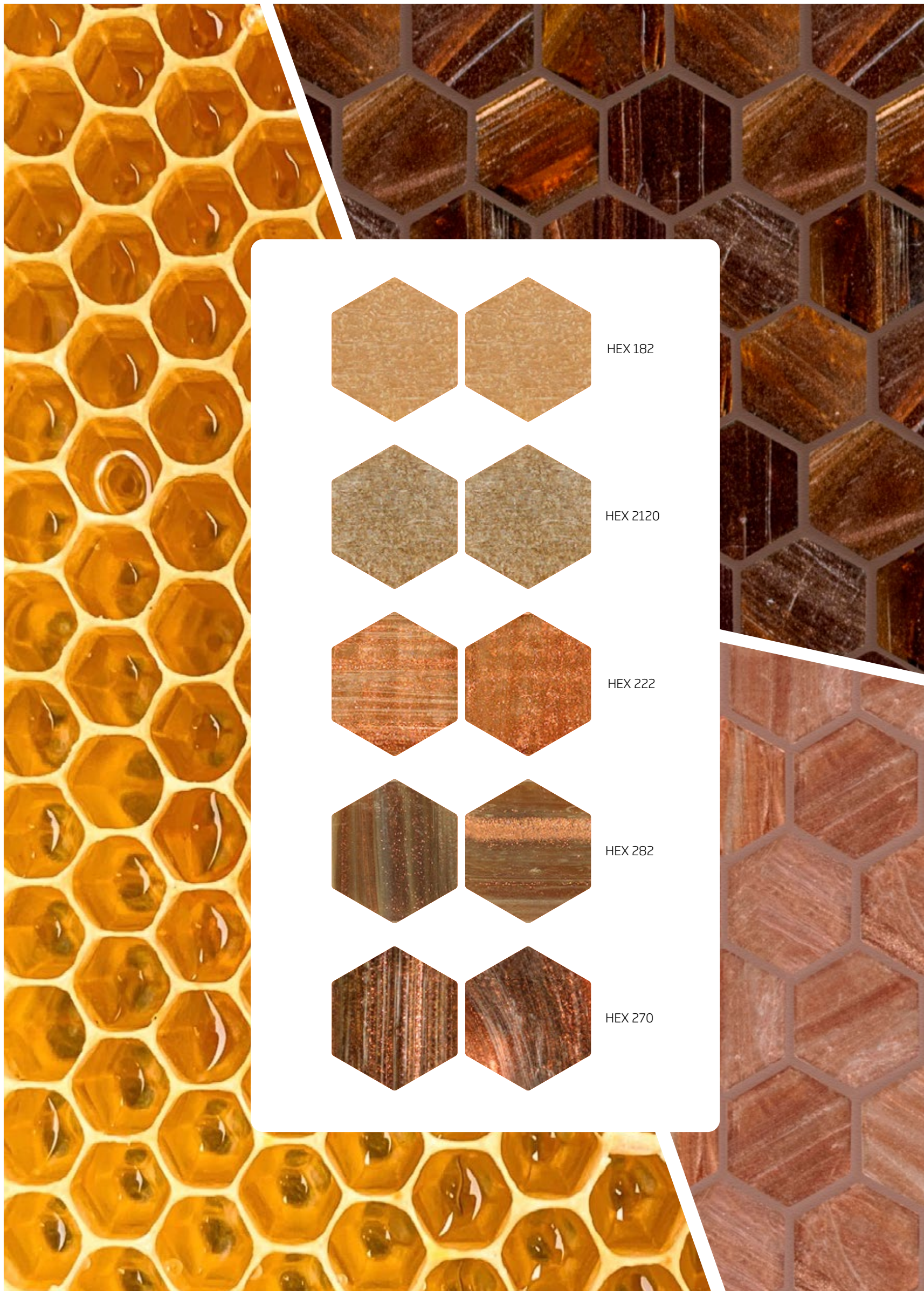




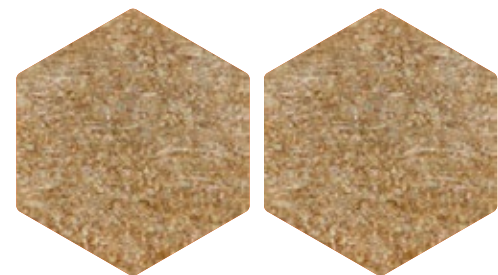
Hexagonal 218 (3 x 3,5 cm | 1 3/16" x 1 3/8")



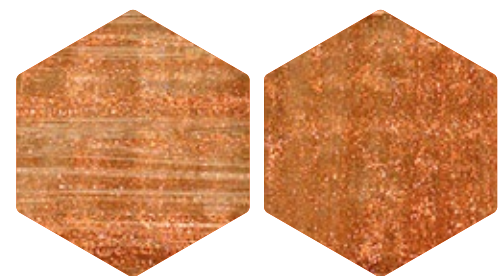




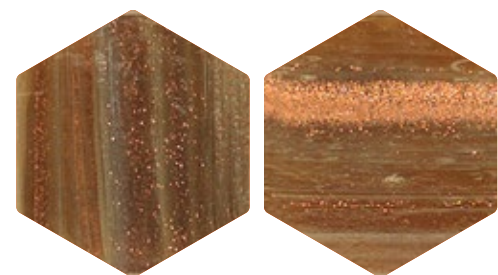
HEX 182



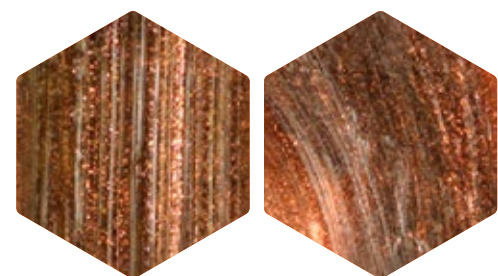
HEX 2120



HEX 222



HEX 282



HEX 270



Hexagonal 282 (3 x 3,5 cm | 1 3/16" x 1 3/8")



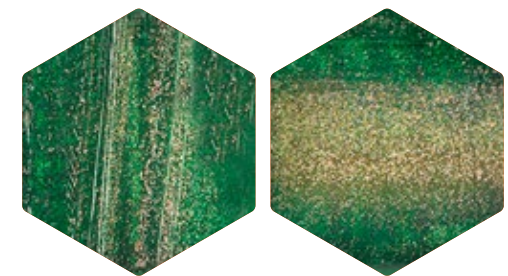


Hexagonal 222 (3 x 3,5 cm | 1 3/16" x 1 3/8")

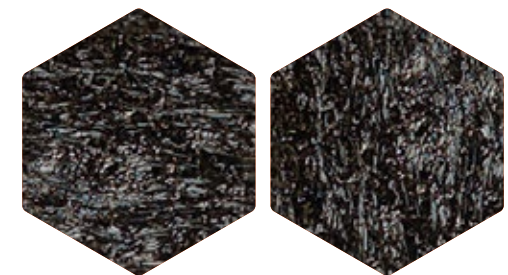




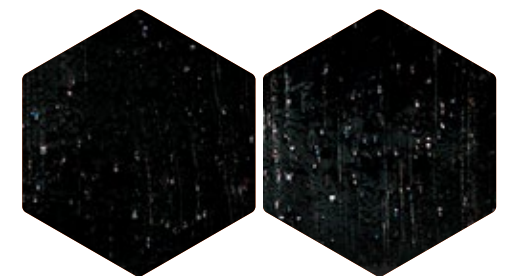
Hexagonal 2124 (3 x 3,5 cm | 1 3/16" x 1 3/8")



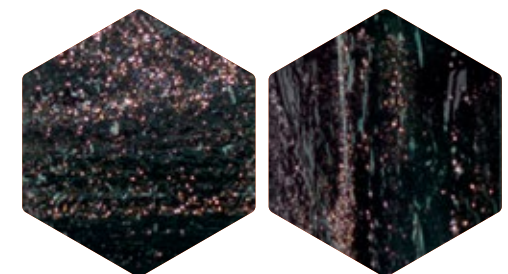
HEX 236



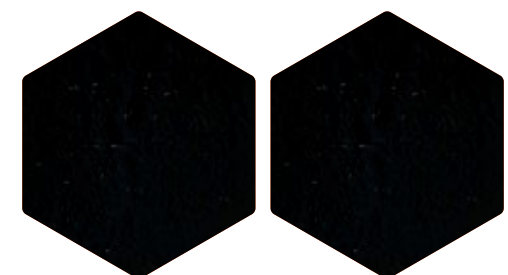
HEX 2124



HEX 2104



HEX 260



HEX 208



---

# Transforming dreams into art

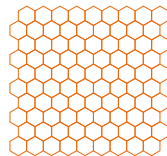
The unique ability to synthesize the essential principles of Italian tradition with the dynamic creativity of today's most celebrated designers, architects and artists.



Hexagonal 208 (3 x 3,5 cm | 1 3/16" x 1 3/8")



# HEXAGONAL 3 x 3,5 cm | 1 3/16" x 1 3/8"



Modular size | Formato modulo  
Format module | Modulgröße  
Formato módulo | Формат модуля  
29,6 x 28,4 cm | 11 3/8" x 11 3/16"



HEX 160



HEX 280



HEX 182



HEX 2120



HEX 150



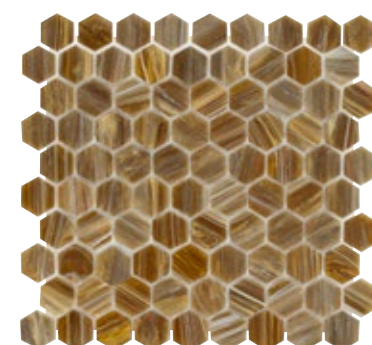
HEX 152



HEX 2102



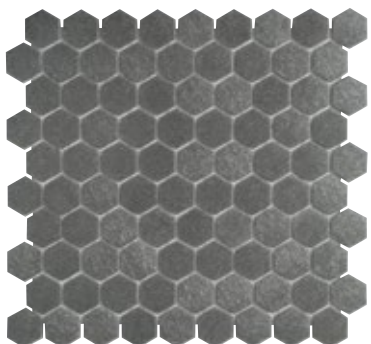
HEX 222



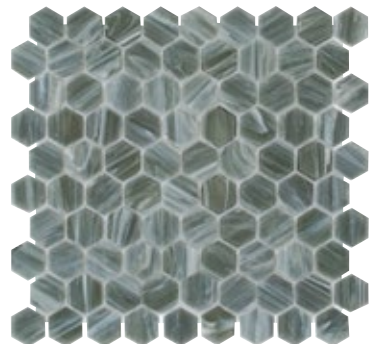
HEX 282



HEX 270



HEX 154



HEX 216



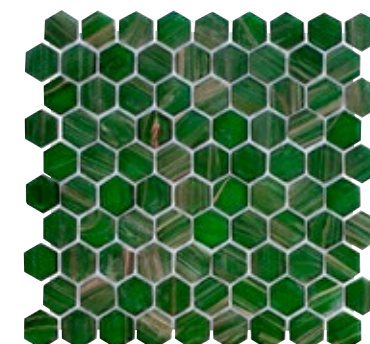
HEX 218



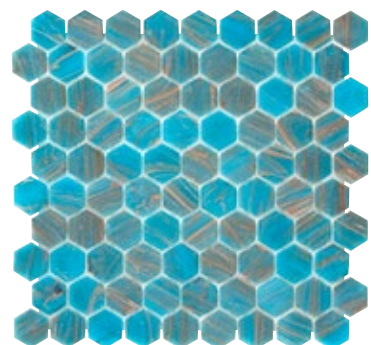
HEX 2124



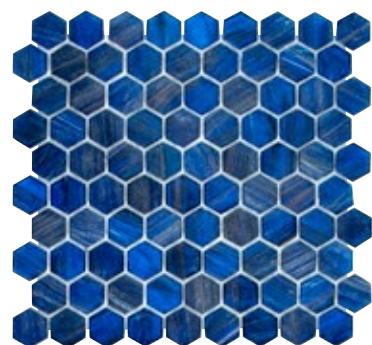
HEX 2104



HEX 236



HEX 242



HEX 239



HEX 260



HEX 208

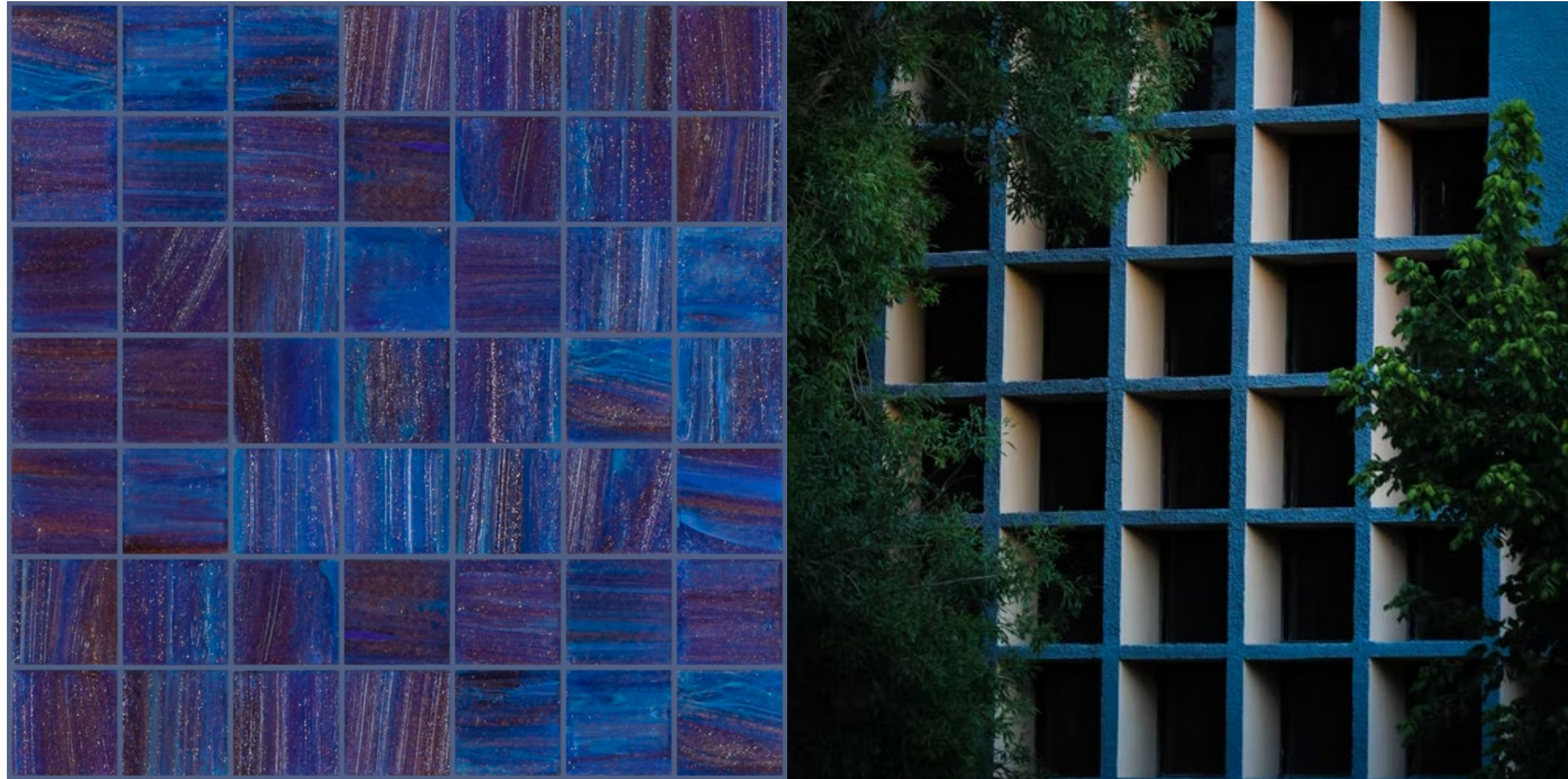






---

# Square



Square 287 (4 x 4 cm | 1 1/2" x 1 1/2")

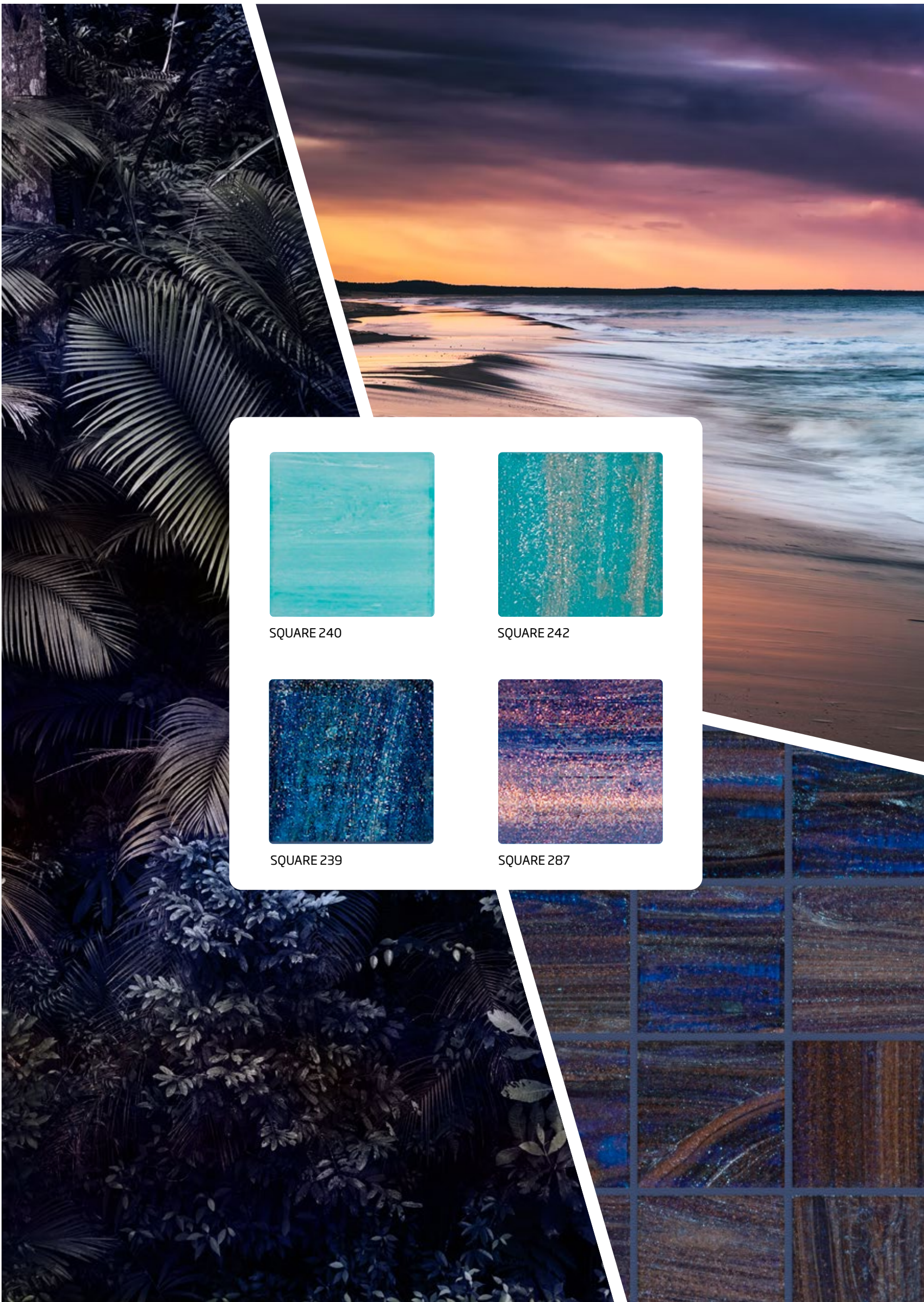
SQUARE, semi-transparent or opaque molten glass mosaic colors, veined with sparkling enamels and aventurina stone and shaped into square tiles.





Square 242 (4 x 4 cm | 1 1/2" x 1 1/2")



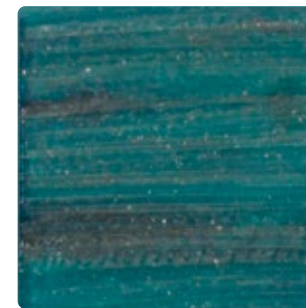


Square 239 (4 x 4 cm | 1 1/2" x 1 1/2")

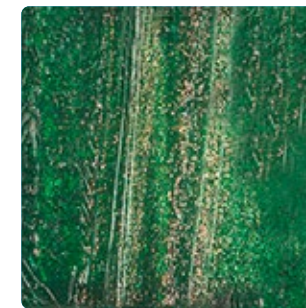




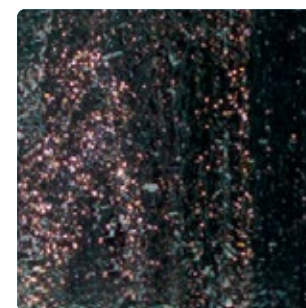
Square 288 (4 x 4 cm | 1 1/2" x 1 1/2")



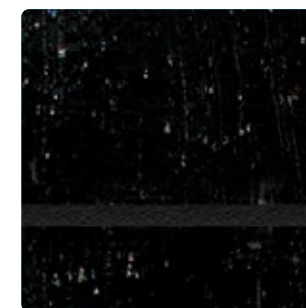
SQUARE 288



SQUARE 236



SQUARE 260



SQUARE 2104

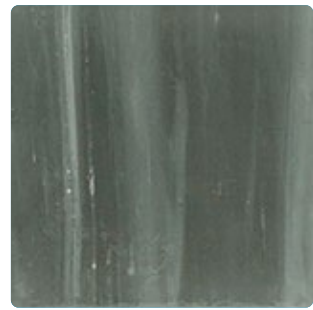




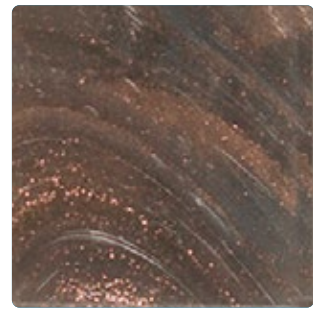
SQUARE 280



SQUARE 282



SQUARE 216

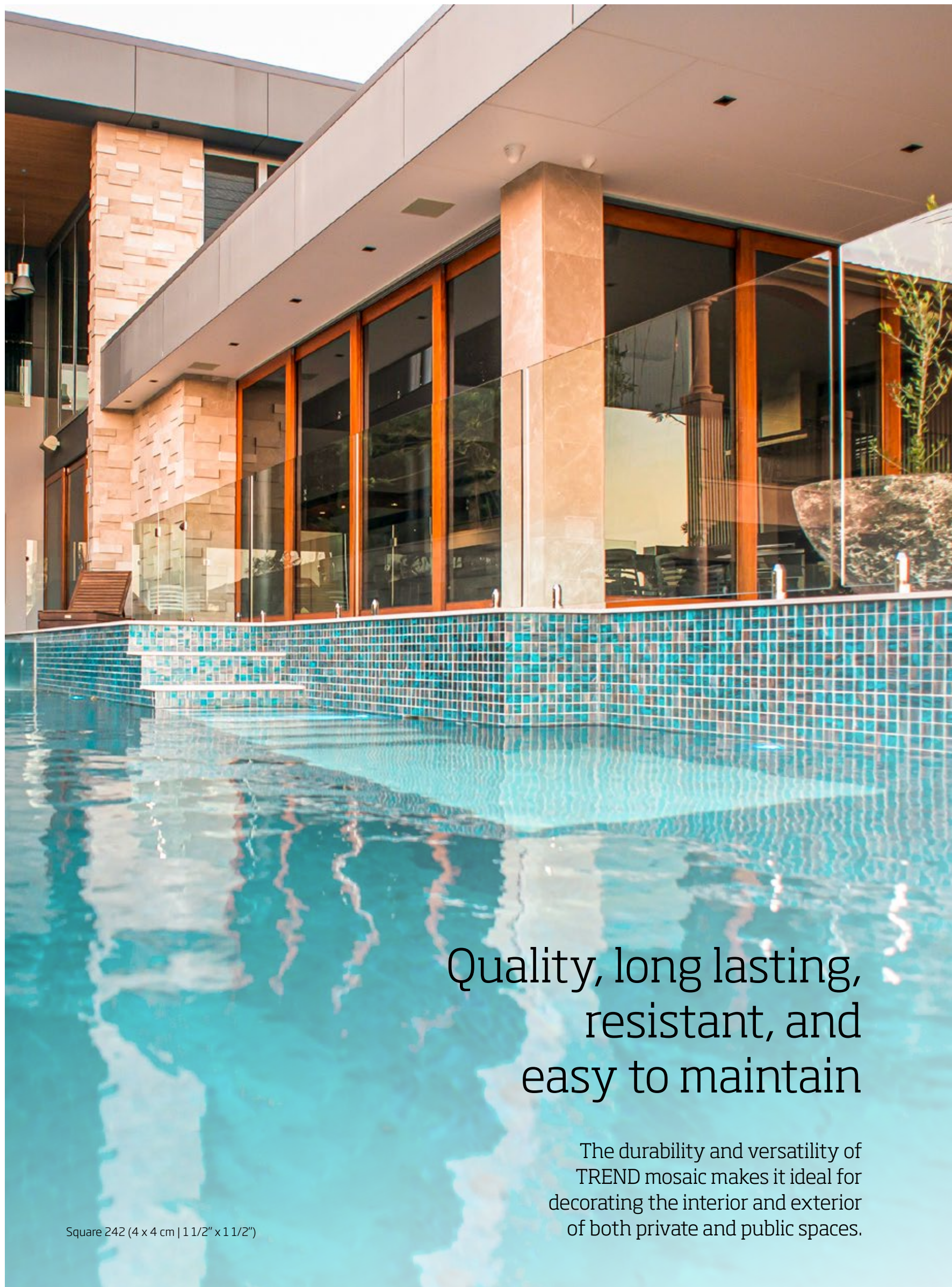


SQUARE 218



Square 280 (4 x 4 cm | 1 1/2" x 1 1/2")





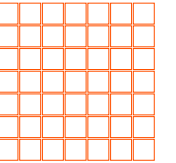
Quality, long lasting,  
resistant, and  
easy to maintain

The durability and versatility of  
TREND mosaic makes it ideal for  
decorating the interior and exterior  
of both private and public spaces.

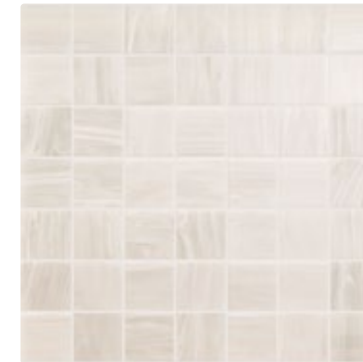
Square 242 (4 x 4 cm | 1 1/2" x 1 1/2")

# SQUARE

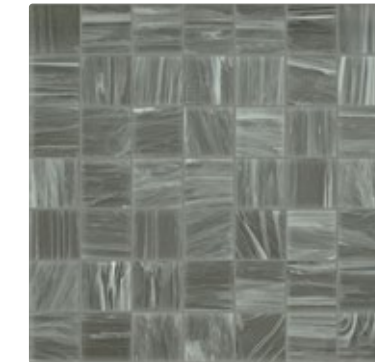
4 x 4 cm | 1 1/2" x 1 1/2"



29,3 x 29,3 cm  
11 1/2" x 11 1/2"



SQUARE 280



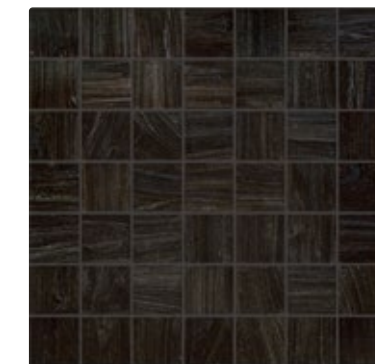
SQUARE 216



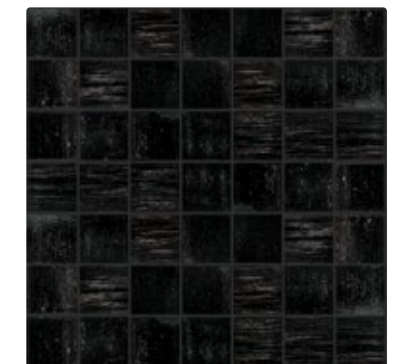
SQUARE 218



SQUARE 282



SQUARE 260



SQUARE 2104



SQUARE 240



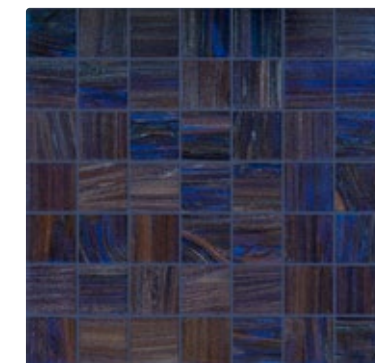
SQUARE 242



SQUARE 288



SQUARE 287



SQUARE 239



SQUARE 236







---

# Rectangular



Rectangular 222 (2 x 4 cm | 3/4" x 1 1/2")

RECTANGULAR, semi-transparent or opaque molten glass mosaic colors, veined with sparkling enamels and aventurina stone and shaped into rectangular tiles.





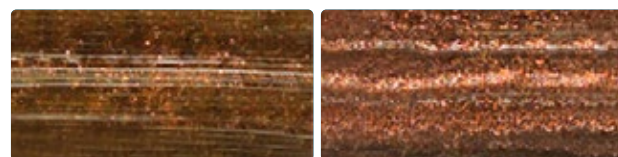
RECT 280



RECT 222



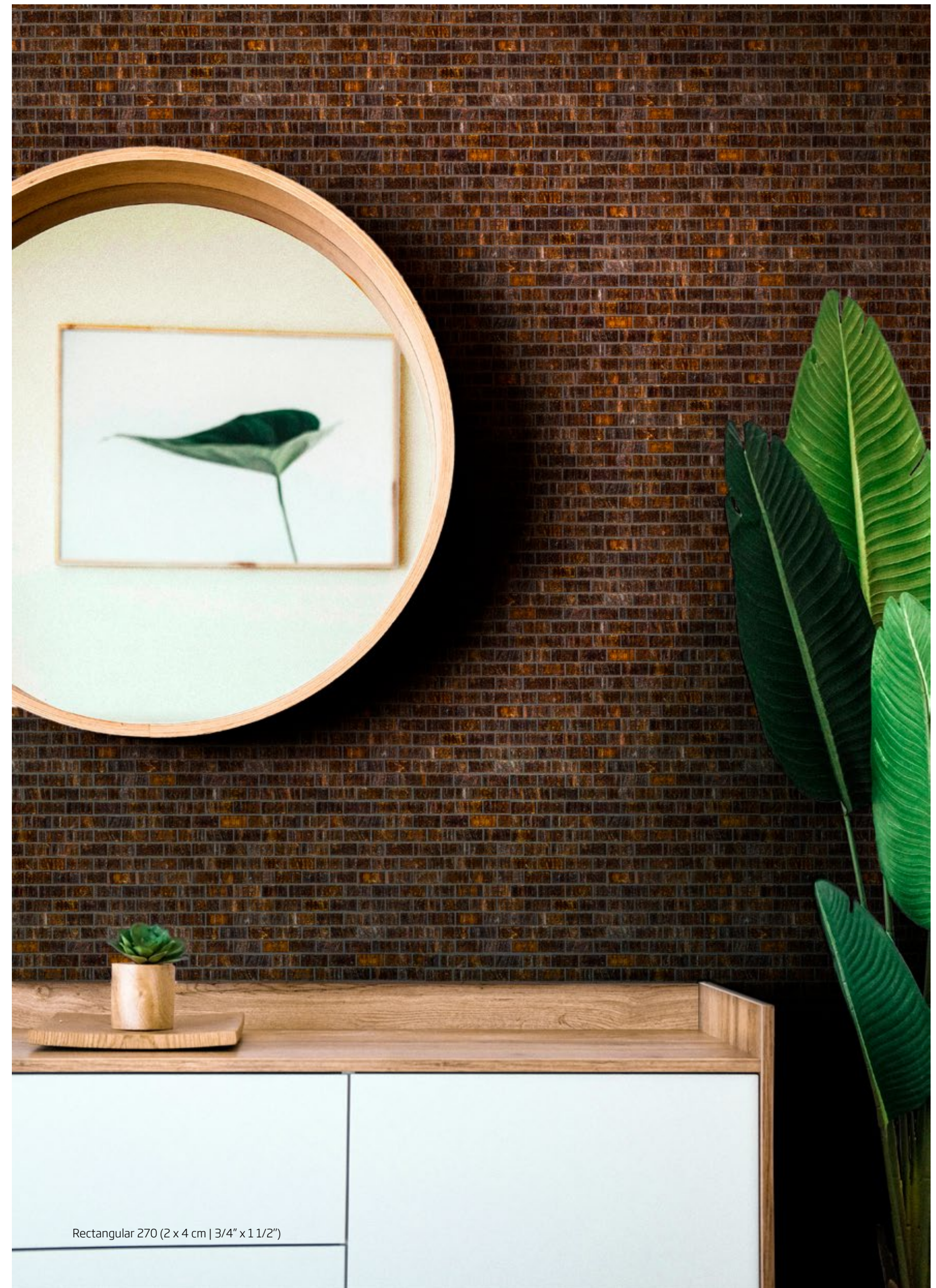
RECT 282



RECT 270



RECT 260



Rectangular 270 (2 x 4 cm | 3/4" x 1 1/2")



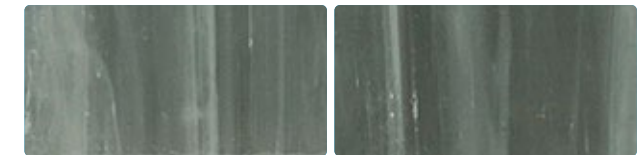


Rectangular 218 (2 x 4 cm | 3/4" x 1 1/2")

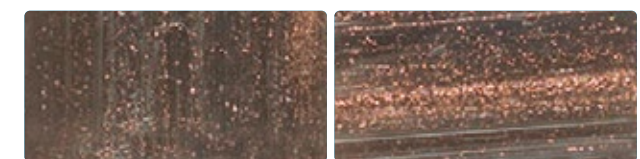




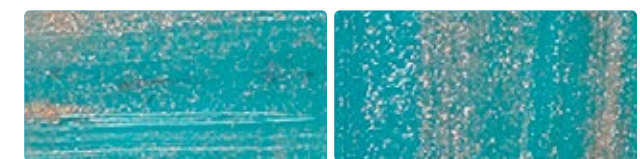
Rectangular 242 (2 x 4 cm | 3/4" x 1 1/2")



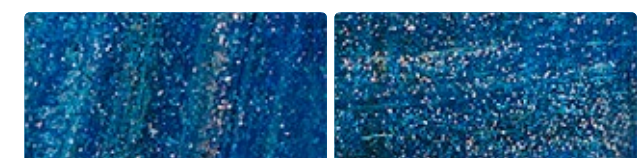
RECT 216



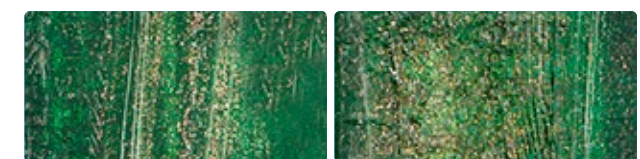
RECT 218



RECT 242



RECT 239



RECT 236





Rectangular 239 (2 x 4 cm | 3/4" x 1 1/2")



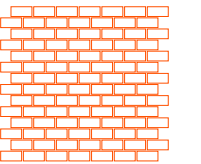


Each piece  
is unique and  
exclusive

TREND conveys beauty and simplicity  
allowing you to express your own  
design creativity. It's easy to create  
your own custom project.

# RECTANGULAR 2 x 4 cm | 3/4" x 1 1/2"

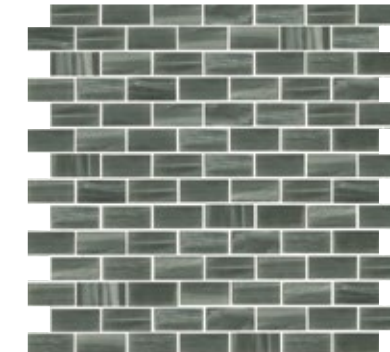
Staggered joint | Giunto sfalsato  
Joint décalé | Versetzt geklebt  
Junto escalonado | Шов смещенный



Modular size | Formato modulo  
Format module | Modulgröße  
Formato módulo | Формат модуля  
29,3 x 29,5 cm | 11 1/2" x 11 5/8"



RECT 280



RECT 216



RECT 282



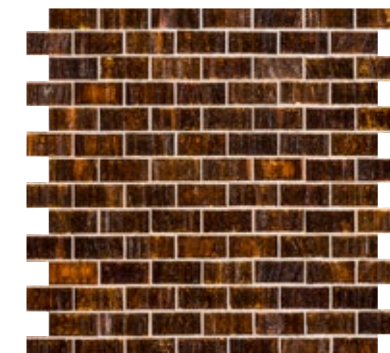
RECT 218



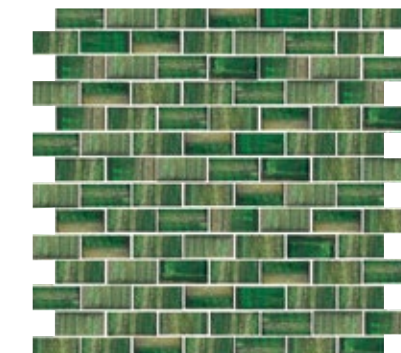
RECT 260



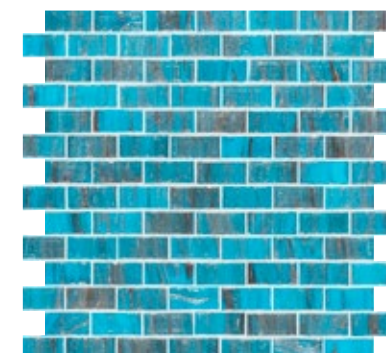
RECT 222



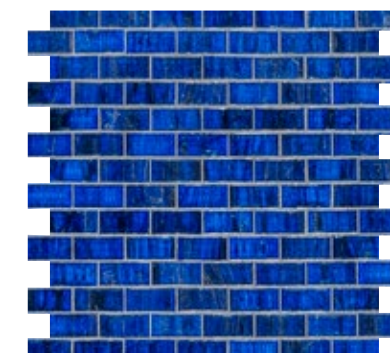
RECT 270



RECT 236



RECT 242



RECT 239



# Technical Information



## HEXAGONAL WEIGHT AND DIMENSIONS

TABELLA MISURE E PESI | TABLEAU DES POIDS ET DIMENSIONS |  
GRÖÖE UND GEWICHTE | TABLA DE MEDIDAS Y PESOS | РАЗМЕРЫ И ВЕС

SIZE FORMATO FORMAT FORMAT TAMAÑO РАЗМЕР	35 x 30 mm   1 3/16" x 1 3/8" (35,61 x 30,84 mm)
THICKNESS SPESSORE EPAISSEUR STÄRKE ESPESOR ТОЛЩИНА	~ 5 mm   3/16"
SHEETS SIZE DIMENSIONE FOGLI DIMENSION PLAQUES ABMESSUNG DER BLÄTTER MEDIDAS HOJAS РАЗМЕР ЛИСТА	32,6 x 35,0 cm 1' 27/32" x 1' 1 25/32"
MODULAR SIZE FORMATO MODULO FORMAT MODULE MODULGRÖÖSE FORMATO MÓDULO ФОРМАТ М. ОДУЛЯ	28,4 x 29,6 cm 11 3/16" x 11 21/32"
JOINT GIUNTO JOINT ABMESSUNG DER FUGE JUNTA ШОВ	~ 2 mm   3/32"
WEIGHT PESO POIDS GEWICHT PESO ВЕС	~ 9 Kg/m <sup>2</sup>   1.84 lbs/SQF
QUANTITY PER BOX QUANTITÀ PER SCATOLA QUANTITÄT PRO KARTON QUANTITÄT PRO KARTON CANTIDAD POR CAJA КОЛИЧЕСТВО В ОДНОЙ КОРОБКЕ	1.411 m <sup>2</sup>   15.177 SQF
BOXES PER PALLET SCATOLE/PALETTA CARTONS/PALETTE KARTONS PRO PALETTE CAJAS/PALLET КОЛИЧЕСТВО КОРОБОК В ПОДДОНЕ	72
PALLET WEIGHT PESO PALETTA POIDS PALETTE PALETTENGWICHT PESO PALLET ВЕС ПОДДОНА	~ 1000 Kg   ~ 2204.62

## TEST ASTM

TEST PERFORMED AND REQUIREMENTS	CONCLUSIONS
Range of thickness (ASTM C499)	passes
Facial dimensions (ASTM C499)	passes
Wedging (ASTM C502)	passes
Water absorption (ASTM C373)	passes
Thermal shocks (ASTM C484)	passes
Bond Strenght (ASTM C482)	passes
Crazing (ASTM C424)	passes

## TEST DATA

CARATTERISTICHE TECNICHE | CARACTÉRISTIQUES TECHNIQUES |  
TECHNISCHE EIGENSCHAFTEN | CARACTERÍSTICAS TÉCNICAS |  
ТЕХНИЧЕСКИЙ РАЗДЕЛ

	UNI EN ISO 10545 (13)	RESISTANCE TO CHEMICAL AGENTS RESISTENZA AGLI AGENTI CHIMICI RESISTANCE AUX PRODUITS CHIMIQUES SÄURE- UND LAUGENBESTÄNDIGKEIT RESISTENCIA A LOS AGENTES QUÍMICOS УСТОЙЧИВОСТЬ К ВОЗДЕЙСТВИЮ КИСЛОТ	resistant resistente résistant beständig resistente устойчива
	UNI EN ISO 10545 (9)	RESISTANCE TO THERMAL SHOCKS RESISTENZA AGLI SBALZI TERMICI RESISTANCE AUX CHOCS THERMIQUES TEMPERATURWECHSELBESTÄNDIGKEIT RESISTENCIA A LOS CAMBIOS DE TEMPERATURA УСТОЙЧИВОСТЬ К ПЕРЕПАДАМ ТЕМПЕРАТУРЫ	resistant resistente résistant beständig resistente устойчива
	UNI EN ISO 10545 (3)	WATER ABSORPTION ASSORBIMENTO ACQUA ABSORPTION D'EAU WASSERAUFNAHME ABSORCION DE AGUA ВОДОПОГЛОЩЕНИЕ	none nullo nulle null nula ноль
	DIN 51094	COLOURS RESISTANCE TO FADING RESISTENZA DEI COLORI ALLA LUCE RESISTANCE DES COULEURS A LA LUMIERE FARBBESTÄNDIGKEIT RESISTENCIA DE LOS COLORES A LA LUZ УСТОЙЧИВОСТЬ К СВЕТУ	resistant resistente résistant beständig resistente устойчива
	UNI EN ISO 10545 (12)	FROST RESISTANCE RESISTENZA AL GELO RESISTANCE AU GEL FROSTBESTÄNDIGKEIT RESISTENCIA AL HIELO МОРОЗОУСТОЙЧИВОСТЬ	resistant resistente résistant beständig resistente устойчива
	DIN 51097	SLIP RESISTANCE ON BARE FEET RESISTENZA ALLA SCIVOLOSITÀ A PIEDI NUDI RESISTANCE AU GLISSEMENT A PIEDS NUS RUTSCHFESTIGKEIT BARFUSS RESISTENCIA ANTIDESLIZANTE CON PIES DESNUDOS УСТОЙЧИВОСТЬ К СКОЛЬЖЕНИЮ, БОСИКОМ	class B classe B classe B Klasse B clase B класс B



**SQUARE 4 x 4**

**WEIGHT AND DIMENSIONS**

TABELLA MISURE E PESI | TABLEAU DES POIDS ET DIMENSIONS | TECHNISCHE EIGENSCHAFTEN | CARACTERÍSTICAS TÉCNICAS | ТЕХНИЧЕСКИЙ РАЗДЕЛ







SIZE FORMATO FORMAT FORMAT TAMAÑO РАЗМЕР	4 x 4 cm 1 1/2" x 1 1/2"
THICKNESS SPESSORE EPAISSEUR STÄRKE ESPESOR ТОЛЩИНА	~ 4 mm   5/32"
SHEETS SIZE DIMENSIONE FOGLI DIMENSION PLAQUES ABMESSUNG DER BLÄTTER MEDIDAS HOJAS РАЗМЕР ЛИСТА	~ 29,3 x 29,3 cm ~ 11 1/2" x 11 1/2"
JOINT GIUNTO JOINT ABMESSUNG DER FUGE JUNTA ШОВ	~ 2 mm   3/32"
WEIGHT PESO POIDS GEWICHT PESO БЕС	~ 6 kg/m <sup>2</sup> ~ 1.22 lbs/sqf
QUANTITY PER CARTON QUANTITÀ PER SCATOLA QUANTITE PAR CARTON QUANTITAT PRO KARTON CANTIDAD POR CAJA КОЛИЧЕСТВО В ОДНОЙ КОРОБКЕ	1,716 m <sup>2</sup> 18.47 SQF
CARTONS PER PALLET SCATOLE/PALETTA CARTONS/PALETTE KARTONS PRO PALETTE CAJAS/PALLET КОЛИЧЕСТВО КОРОБОК В ПОДДОНЕ	72
PALLET WEIGHT PESO PALETTA POIDS PALETTE PALETTENGEWICHT PESO PALLET БЕС ПОДДОНА	~ 867 kg ~ 1911.40 lb

**TEST ASTM**

TEST PERFORMED AND REQUIREMENTS	CONCLUSIONS
Range of thickness (ASTM C499)	passes
Facial dimensions (ASTM C499)	passes
Wedging (ASTM C502)	passes
Water absorption (ASTM C373)	passes
Thermal shocks (ASTM C484)	passes
Bond Strenght (ASTM C482)	passes
Crazing (ASTM C424)	passes

**TEST DATA**

CARATTERISTICHE TECNICHE | CARACTÉRISTIQUES TECHNIQUES | TECHNISCHE EIGENSCHAFTEN | CARACTERÍSTICAS TÉCNICAS | ТЕХНИЧЕСКИЙ РАЗДЕЛ

	UNI EN ISO 10545 (13)	RESISTANCE TO CHEMICAL AGENTS RESISTENZA AGLI AGENTI CHIMICI RESISTANCE AUX PRODUITS CHIMIQUES SÄURE- UND LAUGENBESTÄNDIGKEIT RESISTENCIA A LOS AGENTES QUÍMICOS УСТОЙЧИВОСТЬ К ВОЗДЕЙСТВИЮ КИСЛОТ	resistant resistente résistant beständig resistente устойчива
	UNI EN ISO 10545 (9)	RESISTANCE TO THERMAL SHOCKS RESISTENZA AGLI SBALZI TERMICI RESISTANCE AUX CHOCS THERMIQUES TEMPERATURWECHSELBESTÄNDIGKEIT RESISTENCIA A LOS CAMBIOS DE TEMPERATURA УСТОЙЧИВОСТЬ К ПЕРЕПАДАМ ТЕМПЕРАТУРЫ	resistant resistente résistant beständig resistente устойчива
	UNI EN ISO 10545 (3)	WATER ABSORPTION ASSORBIMENTO ACQUA ABSORPTION D'EAU WASSERAUFNAHME ABSORCION DE AGUA ВОДОПОГЛОЩЕНИЕ	none nullo nulle null nula ноль
	DIN 51094	Colors RESISTANCE TO FADING RESISTENZA DEI COLORI ALLA LUCE RESISTANCE DES COULEURS A LA LUMIERE FARBBESTÄNDIGKEIT RESISTENCIA DE LOS COLORES A LA LUZ УСТОЙЧИВОСТЬ К СВЕТУ	resistant resistente résistant beständig resistente устойчива
	UNI EN ISO 10545 (12)	FROST RESISTANCE RESISTENZA AL GELO RESISTANCE AU GEL FROSTBESTÄNDIGKEIT RESISTENCIA AL HIELO МОРОЗОУСТОЙЧИВОСТЬ	resistant resistente résistant beständig resistente устойчива
	DIN 51097	SLIP RESISTANCE ON BARE FEET RESISTENZA ALLA SCIVOLOSITÀ A PIEDI NUDI RESISTANCE AU GLISSEMENT A PIEDS NUS RUTSCHFESTIGKEIT BARFUSS RESISTENCIA ANTIDESLIZANTE CON PIES DESNUDOS УСТОЙЧИВОСТЬ К СКОЛЬЖЕНИЮ, БОСИКОМ	class B classe B classe B Klasse B clase B класс B

**RECTANGULAR 2 x 4 cm**

**WEIGHT AND DIMENSIONS**

TABELLA MISURE E PESI | TABLEAU DES POIDS ET DIMENSIONS | TECHNISCHE EIGENSCHAFTEN | CARACTERÍSTICAS TÉCNICAS | ТЕХНИЧЕСКИЙ РАЗДЕЛ







SIZE FORMATO FORMAT FORMAT TAMAÑO РАЗМЕР	2 x 4 cm   3/4" x 1 1/2" Giunto sfalsato   Staggered joint   Joint décalé   Versetzt geklebt   Junta partida   Шов смещенный
THICKNESS SPESSORE EPAISSEUR STÄRKE ESPESOR ТОЛЩИНА	~ 4 mm   5/32"
SHEETS SIZE DIMENSIONE FOGLI DIMENSION PLAQUES ABMESSUNG DER BLÄTTER MEDIDAS HOJAS РАЗМЕР ЛИСТА	~ 31,3 x 29,2 cm ~ 12 5/16" x 11 1/2"
MODULAR SIZE FORMATO MODULO FORMAT MODULE MODULGRÖSSE FORMATO MÓDULO ФОРМАТ М. ОДУЛЯ	~ 29,3 x 29,5 cm ~ 11 1/2" x 11 5/8"
JOINT GIUNTO JOINT ABMESSUNG DER FUGE JUNTA ШОВ	~ 1 mm   1/16"
WEIGHT PESO POIDS GEWICHT PESO БЕС	~ 7,6 kg/m <sup>2</sup>   1.55 lbs/sqf
QUANTITY PER CARTON QUANTITÀ PER SCATOLA QUANTITE PAR CARTON QUANTITAT PRO KARTON CANTIDAD POR CAJA КОЛИЧЕСТВО В ОДНОЙ КОРОБКЕ	1,72 m <sup>2</sup>   18.51 sqf
CARTONS PER PALLET SCATOLE/PALETTA CARTONS/PALETTE KARTONS PRO PALETTE CAJAS/PALLET КОЛИЧЕСТВО КОРОБОК В ПОДДОНЕ	72
PALLET WEIGHT PESO PALETTA POIDS PALETTE PALETTENGEWICHT PESO PALLET БЕС ПОДДОНА	~ 1.000 Kg   ~ 2204.62

**TEST ASTM**

TEST PERFORMED AND REQUIREMENTS	CONCLUSIONS
Range of thickness (ASTM C499)	passes
Facial dimensions (ASTM C499)	passes
Wedging (ASTM C502)	passes
Water absorption (ASTM C373)	passes
Thermal shocks (ASTM C484)	passes
Bond Strenght (ASTM C482)	passes
Crazing (ASTM C424)	passes

**TEST DATA**

CARATTERISTICHE TECNICHE | CARACTÉRISTIQUES TECHNIQUES | TECHNISCHE EIGENSCHAFTEN | CARACTERÍSTICAS TÉCNICAS | ТЕХНИЧЕСКИЙ РАЗДЕЛ

	UNI EN ISO 10545 (13)	RESISTANCE TO CHEMICAL AGENTS RESISTENZA AGLI AGENTI CHIMICI RESISTANCE AUX PRODUITS CHIMIQUES SÄURE- UND LAUGENBESTÄNDIGKEIT RESISTENCIA A LOS AGENTES QUÍMICOS УСТОЙЧИВОСТЬ К ВОЗДЕЙСТВИЮ КИСЛОТ	resistant resistente résistant beständig resistente устойчива
	UNI EN ISO 10545 (9)	RESISTANCE TO THERMAL SHOCKS RESISTENZA AGLI SBALZI TERMICI RESISTANCE AUX CHOCS THERMIQUES TEMPERATURWECHSELBESTÄNDIGKEIT RESISTENCIA A LOS CAMBIOS DE TEMPERATURA УСТОЙЧИВОСТЬ К ПЕРЕПАДАМ ТЕМПЕРАТУРЫ	resistant resistente résistant beständig resistente устойчива
	UNI EN ISO 10545 (3)	WATER ABSORPTION ASSORBIMENTO ACQUA ABSORPTION D'EAU WASSERAUFNAHME ABSORCION DE AGUA ВОДОПОГЛОЩЕНИЕ	none nullo nulle null nula ноль
	DIN 51094	COLORS RESISTANCE TO FADING RESISTENZA DEI COLORI ALLA LUCE RESISTANCE DES COULEURS A LA LUMIERE FARBBESTÄNDIGKEIT RESISTENCIA DE LOS COLORES A LA LUZ УСТОЙЧИВОСТЬ К СВЕТУ	resistant resistente résistant beständig resistente устойчива
	UNI EN ISO 10545 (12)	FROST RESISTANCE RESISTENZA AL GELO RESISTANCE AU GEL FROSTBESTÄNDIGKEIT RESISTENCIA AL HIELO МОРОЗОУСТОЙЧИВОСТЬ	resistant resistente résistant beständig resistente устойчива
	DIN 51097	SLIP RESISTANCE ON BARE FEET RESISTENZA ALLA SCIVOLOSITÀ A PIEDI NUDI RESISTANCE AU GLISSEMENT A PIEDS NUS RUTSCHFESTIGKEIT BARFUSS RESISTENCIA ANTIDESLIZANTE CON PIES DESNUDOS УСТОЙЧИВОСТЬ К СКОЛЬЖЕНИЮ, БОСИКОМ	class B classe B classe B Klasse B clase B класс B



# SPECIFICATIONS

## SPECIFICATIONS

### HEXAGONAL

Fused semi-transparent coloured glass mosaic, veined with enamels and aventurine glaze, formed with hexagonal tiles with a 1.8 cm side, with a thickness of about 5 mm, bevelled, assembled TREND plus support, in 32,6 x 35,0 sheet and with an approximately 2 mm joint. Composite with 41% quality materials, pre-consumer recycled glass and 59% post-consumer recycled glass.

### SQUARE

Fused semi-transparent colored glass mosaic, veined with enamels and aventurine glaze, formed with squared tiles with a 4 cm side, with a thickness of about 4 mm, beveled, assembled TREND plus support, in 29,3 x 29,3 cm sheet and with an approximately 2 mm joint. Composite with 41% quality materials, pre-consumer recycled glass and 59% post-consumer recycled glass.

### RECTANGULAR

Fused semi-transparent colored glass mosaic, veined with enamels and aventurine glaze, formed with rectangular tiles with a 2 x 4 cm side, with a thickness of about 4 mm, beveled, assembled TREND plus support, in 31,3 x 29,2 cm sheet, 29,3 x 29,5 cm modular sheet and with an approximately 2 mm joint. Composite with 41% quality materials, pre-consumer recycled glass and 59% post-consumer recycled glass.

## VOCI DI CAPITOLATO

### HEXAGONAL

Mosaico di vetro semitrasparente colorato in fusione, venato di smalti e aventurina, formato da tessere esagonali con lato di dimensione 1,8 cm, per uno spessore di circa 5 mm, bisellate, assemblate su supporto TREND plus, in fogli di dimensioni 32,6 x 35 cm con fuga pari a circa 2 mm. Composto al 41% di materiale nobile, vetro riciclato pre-consumo e al 59% materiale riciclato post-consumo.

### SQUARE

Mosaico di vetro semitrasparente colorato in fusione, venato di smalti e aventurina, formato da tessere quadrate con lato di dimensione 4 cm, per uno spessore di circa 4 mm, bisellate, assemblate su supporto TREND plus, in fogli di dimensioni 29,3 x 29,3 cm con fuga pari a circa 2 mm. Composto al 41% di materiale nobile, vetro riciclato pre-consumo e al 59% materiale riciclato post-consumo.

### RECTANGULAR

Mosaico di vetro semitrasparente colorato in fusione, venato di smalti e aventurina, formato da tessere rettangolari con lato di dimensione 2 x 4 cm, per uno spessore di circa 4 mm, bisellate, assemblate su supporto TREND plus, in fogli di dimensioni 31,3 x 29,2 cm, il modulo di dimensioni 29,3 x 29,5 cm con fuga pari a circa 2 mm. Composto al 41% di materiale nobile, vetro riciclato pre-consumo e al 59% materiale riciclato post-consumo.

## ARTICLES DE CAHIER DES CHARGES

### HEXAGONAL

Mosaïque en verre semi-transparent coloré en fusion, aspect veiné émaux et aventurine, formée de tesselles hexagonales avec côté de dimension 1,8 cm pour une épaisseur d'environ 5 mm, biseautées, assemblées sur support TREND plus, en feuilles de dimensions 32,6 x 35,0 cm avec joint équivalent à environ 2 mm. Composée à 41% de matériel noble, verre recyclé pré-consommation et à 59% de matériel recyclé post-consommation.

### SQUARE

Mosaïque en verre semi-transparent coloré en fusion, veinée d'émaux et d'aventurine, composée de tesselles carrées en dimension 4 x 4cm, d'environ 4 mm d'épaisseur, biseautées, assemblées sur support TREND plus, en feuilles de 29,3 x 29,3 cm avec un joint d'environ 2 mm. Composé de 41% de matériaux nobles, de verre recyclé avant consommation et de 59% de matériaux recyclés après consommation.

### RECTANGULAR

Mosaïque en verre semi-transparent coloré en fusion, veinée d'émaux et d'aventurine composée de tesselles rectangulaires en dimension 2 x 4 cm, d'environ 4 mm d'épaisseur, biseautées, assemblées sur support TREND plus, en feuilles de 31,3 x 29,2 cm avec un joint d'environ 2 mm. Composé de 41% de matériaux nobles, de verre recyclé après consommation et de 59% de matériaux recyclés après consommation.

## AUSSCHREIBUNGSTEXTE

### HEXAGONAL

Halbtransparente Glasmosaiksteine, gefärbt beim Schmelzvorgang, geädert mit Emaille und Aventurinquarz, sechskantige Form mit einer Seitenlänge von 1,8 cm und einer Stärke von etwa 5 mm, abgeschrägt und zusammengesetzt auf einem Träger vom Typ TREND plus mit Abmessungen von 32,6 x 35,0 cm und einer Fuge von etwa 2 mm. Bestehend zu 41 % aus edlen Materialien, vor der Verwendung recyceltem Glas, und zu 59 % aus nach der Verwendung recyceltem Material.

### SQUARE

Halbtransparentes Glasmosaik, beim Schmelzvorgang gefärbt, mit Emaille und Aventurinquarz geädert, bestehend aus quadratischen Mosaiksteinchen mit 4 cm Seitenlänge und einer Stärke von etwa 4 mm, abgeschrägt, und auf TREND plus-Träger montiert; Abmessung der Blätter 29,3 x 29,3 cm und etwa 2 mm. Fuge. Bestehend aus 41 % edlen Materialien, Pre-Consumer-Recyclingglas und 59 % Post-Consumer-Recyclingmaterial.

### RECTANGULAR

Halbtransparentes Glasmosaik, beim Schmelzvorgang gefärbt, mit Emaille und Aventurinquarz geädert, bestehend aus rechteckigen Mosaiksteinchen mit 2 x 4 cm. Seitenlänge und einer Stärke von etwa 4 mm, abgeschrägt, und auf TREND plus-Träger montiert; Abmessung der Blätter 31,3 x 29,2 cm, Modulgröße 29,3 x 29,5 cm und etwa 2 mm. Fuge. Bestehend aus 41 % edlen Materialien, Pre-Consumer-Recyclingglas und 59 % Post-Consumer-Recyclingmaterial.

## CAPITULACIÒN

### HEXAGONAL

Mosaico de vidrio semitrasparente coloreado por fusión, vetado de esmaltes y aventurina, formado por teselas con lado de 1,8 cm, con un espesor de aproximadamente 5 mm, biseladas, ensambladas en soporte TREND plus, en láminas de 32,6 x 35,0 cm, con junta igual a aproximadamente 2 mm. Compuesto por un 41% de materiales nobles, vidrio reciclado preconsumo y un 59% de material reciclado postconsumo.

### SQUARE (CUADRADO)

Mosaico de vidrio semi transparente coloreado en fusión, vetado con esmaltes y aventurina, formado por teselas cuadradas de 4 cm por lado y 4 mm aproximados de grosor, biseladas, montadas en soporte TREND plus, en hojas de 29,3 x 29,3 cm con junta aproximada de 2 mm. Compuesto por un 41% de material noble, vidrio reciclado pre consumo y un 59% de material reciclado post consumo.

### RECTANGULAR

Mosaico de vidrio semi transparente coloreado en fusión, vetado con esmaltes y aventurina, formado por teselas rectangulares de 2 x 4 cm de lado y 4 mm aproximados de grosor, biseladas, montadas en soporte TREND plus, en hojas de 31,3 x 29,2 cm, el módulo de 29,3 x 29,5 cm con una junta aproximada de 2 mm. Compuesto por un 41% de material noble, vidrio reciclado pre consumo y un 59% de material reciclado post consumo.

## ОБЩИЕ СВЕДЕНИЯ

### HEXAGONAL

Мозаика из полупрозрачного стекла, окрашенного в массу, с прожилками из смальты и авантюрина, шестиугольной формы, с размером одной стороны 1,8 см, толщиной около 5 мм, с ограниченной кромкой, уложенная на основу TRENDplus, размером 32,6 x 35,0 см, со швом, равным приблизительно 2 мм. Состоит на 41% из ценного материала, вторично переработанного стекла "до потребителя" и на 59% из вторично переработанного материала "после потребителя".

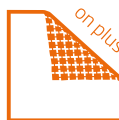
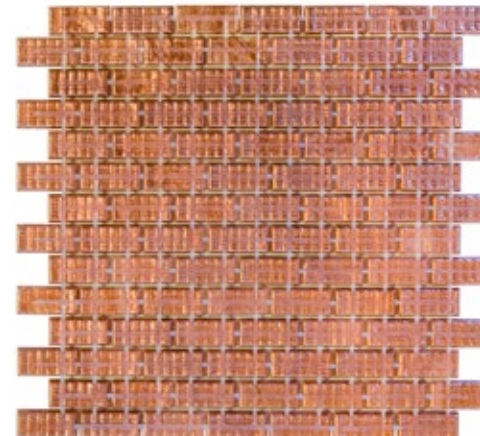
### SQUARE

Мозаика из полупрозрачного стекла, окрашенного в массу, с прожилками из смальты и авантюрина, квадратной формы, форматом 4 x 4 см, толщиной около 4 мм, с ограниченной кромкой, уложенная на основу TREND plus, размер листа 29,3 x 29,3 см, со швом, равным приблизительно 2 мм. Состоит на 41% из ценного материала, вторично переработанного стекла "до потребителя" и на 59% из вторично переработанного стекла "после потребителя".

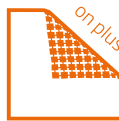
### RECTANGULAR

Мозаика из полупрозрачного стекла, окрашенного в массу, с прожилками из смальты и авантюрина, прямоугольной формы, форматом 2 x 4 см, толщиной около 4 мм, с ограниченной кромкой, уложенная на основу TREND plus, размер листа 31,3 x 29,2 см, размер модуля 29,3 x 29,5 см, со швом, равным приблизительно 2 мм. Состоит на 41% из ценного материала, вторично переработанного стекла "до потребителя" и на 59% из вторично переработанного стекла "после потребителя".

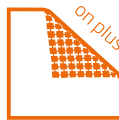
# TREND PLUS



**TREND Plus System** is an innovative technology with polyurethane reactive (PUR) rear support for glass mosaic sheets that makes installation of the material fast and easy. Guaranteed maximum flexibility of the sheet during installation without detaching of the tiles. It can be used with any bonding and is the best solution for the installation of the mosaic in any environment: outdoor, indoor, swimming pools, etc.  
**WARNING: Use a 4 x 4 mm notched trowel for installation.**



**TREND Plus System** è l'innovativa tecnologia con il supporto posteriore in poliuretano reattivo (PUR) per i fogli di mosaico vetroso che rende la posa del materiale semplice e veloce. Garanzia di massima flessibilità del foglio in fase di posa senza che le tessere si stacchino. Può essere utilizzato con qualsiasi collante e rappresenta la migliore soluzione per l'installazione del mosaico in ogni ambiente: esterni, interni, piscine, etc.  
**ATTENZIONE: Per la posa utilizzare spatola dentata 4 x 4 mm.**



**TREND Plus System** est la technologie innovante avec le support au dos en polyuréthane réactif (PUR) pour les feuilles de mosaïque en verre qui rend la pose du matériel simple et rapide. Garantie de la flexibilité maximum de la feuille en phase de pose sans que les tesselles ne se décollent. Il peut être utilisé avec tout type de colle et représente la meilleure solution pour l'installation de la mosaïque dans chaque espace: extérieurs, intérieurs, piscines, etc.  
**ATTENTION : Pour la pose, utiliser la spatule dentée 4 x 4 mm.**



**TREND Plus System** ist die innovative Technologie mit Rückwand aus reaktivem Polyurethan (PUR) für Glasmosaikblätter, die sich dadurch besonders einfach und schnell verlegen lassen. Höchste Flexibilität des Blattes beim Verlegen ohne Ablösen der Mosaiksteine garantiert. Es kann mit jeglichen Klebstoffen verwendet werden und stellt die beste Lösung für das Verlegen von Mosaiken in jedem Ambiente dar: Innen- und Außenbereiche, Pools usw.  
**ACHTUNG: zum Verlegen eine Zahnpachtel von 4 x 4 mm verwenden.**



**TREND Plus System** es la innovadora tecnología con soporte posterior de poliuretano reactivo (PUR) para láminas de mosaico vítreo que hace de la colocación del material una operación simple y rápida. Garantía de máxima flexibilidad de la lámina durante la fase de alicatado, sin que las teselas se suelten. Puede utilizarse con cualquier adhesivo, es la mejor solución para la colocación de mosaicos en cualquier ambiente: exteriores, interiores, piscinas, etc.  
**ATENCIÓN: Para el alicatado utilice una llana dentada de 4 x 4 mm.**



**TREND Plus System** - инновационная технология с подложкой из реактивного полиуретана (PUR) для листов стеклянной мозаики, делающая укладку материала более простой и быстрой. Гарантия максимальной гибкости листа в фазе укладки, не вызывающей отсоединения чипсов. Может использоваться с любым клеем и представляет собой наилучшее решение для установки мозаики на любых поверхностях: наружных, внутренних, бассейнах и т.д.  
**ВНИМАНИЕ: Для укладки использовать зубчатый шпатель 4 x 4 мм.**





Rectangular 222 (2 x 4 cm | 3/4" x 1 1/2")

## SUGGESTED GROUT COLORS

FUGANTI COLORATI | JOINTS COLORES | FARBIGE FUGENMASSEN | JUNTA COLORADA | ЦВЕТНЫЕ ЗАПОЛНИТЕЛИ ШВОВ

BIANCO ASSOLUTO
BIANCO GHIACCIO
BIANCO TITANIO
GRIGIO PERLA
GRIGIO SETA
GRIGIO PIOMBO
GRIGIO CEMENTO
GRIGIO ARDESIA
NERO GRAFITE
NERO CARBONIO
AVORIO
NATURALE
TRAVERTINO
SABBIA
GREIGE
TORTORA
TABACCO
CACAO
CUOIO
CAFFÈ
AZZURRO PASTELLO
AZZURRO POLVERE
AZZURRO CARAIBI
BLU AVIO
BLU DENIM
BLU ZAFFIRO
VERDE SALVIA
VERDE SMERALDO
VERDE PRATO
VERDE PINO
ROSA CIPRIA
VIOLA AMETISTA
ROSSO ORIENTE
ROSSO MATTONE
GIALLO VANIGLIA
CRYSTAL

Suggested grout colors are indicative and are intended for reference only. Adhere strictly to the manufacturer's instructions. Contact Sales Office for more information.



ITALY  
Piazzale Fracon 8  
36100 Vicenza | Italy  
info-it@trend-group.com

USA  
1565 NW 36th Street  
Miami, FL 33142 USA  
info-us@trend-group.com

## EVERGREEN BY DEBRA, LLC

- Ceramic & Glass Tile • Art Images in Hard Surfaces
- 100% Permeable Pavers • Planters



**Woman Owned Small Business  
Certified DBE**

47-388 Kamehameha Hwy  
Kaneohe, HI 96744-4736 USA  
Ph 808-239-6599 Fax 808-239-8556

[EvergreenbyDebra.com](http://EvergreenbyDebra.com)

[trend-group.com](http://trend-group.com)

March 2022 | Editor: Federica Bisazza  
Graphic Designer: Federico Sanson

Reproduction of any part of this book and publication on the internet or on any other medium is not permitted without TREND Group's written permission.  
©2022 TREND Group - All rights reserved

Colors in glass and ink are different, so the product shades as reproduced here are intended for reference only.



[trend-group.com](http://trend-group.com)

